

2024'25 SEASON



THE SAINT PAUL  
**CHAMBER**  
ORCHESTRA

# 2024 '25 SEASON

Making world-class performances accessible to everyone in our community.



## Welcome to Our 66th Season!

Exploring themes of transformation through the prism of the four seasons.

As always, our programming is grounded in the artistic vision of SPCO musicians and our unique musician-led artistic model. This season, four SPCO musicians have curated unique programs inspired by their own interests, and ten will lead the orchestra as soloists in our signature uncondducted style.

In addition to musician-led performances, we are thrilled to collaborate with many new and familiar guest artists. This season, we welcome our newest Artistic Partner, Gábor Takács-Nagy, as well as returning Artistic Partners Tabea Zimmermann, Abel Selaocoe and Richard Egarr. Composer Valerie Coleman will conclude her Sandbox Residency with a world premiere performed by the SPCO.

### Table of Contents

Welcome .....	2-4
Concert Membership .....	5
Artistic Partners .....	7
Concert Schedule .....	12-27
Ticketing Info and Helpful Tips .....	28-30
Our Venues .....	32-33
Sponsors .....	35



## Land Acknowledgment

We, The Saint Paul Chamber Orchestra, gather to share music on Dakota land.

We invite a pause to recognize that Mni Sota Makoce (Minnesota) is the homeland of the Dakota people, the Anishinaabe people and Indigenous people from other Native nations who continue to nurture this land and rich cultural traditions. With respect and gratitude, we commit to honor past, present and future Native and Indigenous people through music and continued learning.

## Statement of Welcome

Together with our fellow Arts Partnership organizations, the SPCO is committed to creating a welcoming, safe and inclusive environment at all performances and programs for people from all backgrounds.

## Support Provided by



This project is supported in part by an award from the National Endowment for the Arts.



YourClassical MPR has been the SPCO's radio home for more than 50 years.



This activity is made possible by the voters of Minnesota through a Minnesota State Arts Board Operating Support grant, thanks to a legislative appropriation from the Arts and Cultural Heritage fund.



The Saint Paul Cultural STAR program provides special project funding, allowing the SPCO to expand and enhance its work.

# Concert Membership

Your pass to unlimited concerts!



Simple, flexible and affordable! For as low as \$5/month, Concert Members can attend an unlimited number of SPCO performances at no additional charge.

[thespco.org/membership](https://thespco.org/membership)





# Free tickets for children and students

We are committed to accessibility, which means sharing world-class performances with everyone in our community.

Everyone deserves the opportunity to experience transformational performances, including young people. With free tickets for children and students of any age, it is easier than ever to bring the whole family to experience SPCO concerts!

Learn more at [thespco.org/newgeneration](https://thespco.org/newgeneration).

Interested in bringing a school group to a concert?

Connect with us at [groupsales@spcomail.org](mailto:groupsales@spcomail.org).

# Artistic Partners

Creating collaborative, modern artistic models with musicians from all over the world.



**Tabea Zimmermann**

**September 13–15**

**Mozart's Sinfonia Concertante with Steven Copes**

**March 27–30**

**Bruch and Korngold with Tabea Zimmermann**



**Abel Selaocoe**

**October 18–20**

**When We Were Trees with Abel Selaocoe**

**February 14–16**

**Four Spirits with Abel Selaocoe**



**Richard Egarr**

**December 13–15**

**Bach's Brandenburg Concertos with Richard Egarr**

**March 14–16**

**Haydn's Drum Roll Symphony with Richard Egarr**



**Gábor Takács-Nagy**

**June 13–15**

**Mozart's Prague Symphony with Gábor Takács-Nagy**

● Photo by Marco Borggreve





## Northside Series



Located on West Broadway in North Minneapolis, the Capri is deeply invested in enriching the skills, prospects and spirit of North Minneapolis area youth and adults through the arts. The SPCO is proud to celebrate its 15th season of partnership in the 2024.25 season. Tickets for the concerts at this recently renovated, historic theater are free for children, students, Northside residents and families of Northside school students.

[thespco.org/northside](https://thespco.org/northside)

### Beethoven, Coleman and Tate

Fri **NOV 8** 7:00 pm Capri Theater, North Minneapolis  
*See page 15.*

### Beethoven and Tower

Fri **FEB 7** 7:00 pm Capri Theater, North Minneapolis  
*See page 20.*

### Beethoven, Coleman and Schifrin

Fri **APR 4** 7:00 pm Capri Theater, North Minneapolis  
*See page 23.*

## Express Concerts

We strive to provide a variety of ways to attend SPCO concerts, including this alternative concert format. Express Concerts do not include an intermission break, providing a concert experience of approximately 75 minutes.

A limited number of Express Concerts are offered throughout the season across different venues. Express Concerts are marked with ● throughout this calendar.

Learn more at [thespco.org/express](https://thespco.org/express).

## The Arts Partnership

The SPCO is a proud member of the Arts Partnership, a strategic alliance of four performing arts organizations — Minnesota Opera, the Ordway, the SPCO and Schubert Club — that ensures equitable sharing and effective care of the Ordway Center as a vital cultural asset in the Twin Cities.



THE ARTS PARTNERSHIP

MN  
OPERA

ORDWAY

THE SAINT PAUL  
CHAMBER  
ORCHESTRA

Schubert Club

Learn more at [artspartnership.org](https://artspartnership.org).

# Creative Leads

The creative role of SPCO musicians extends far beyond concerts on stage. Musicians are involved in programming discussions and



SEP 20–21

## Mozart's *Haffner* Symphony

Euna Koh, violin and creative lead



NOV 14–17

## Haydn's *Il Distratto* Symphony

Andrew Brady, creative lead

are empowered to bring forward repertoire and project ideas. This season features four programs curated by SPCO musicians that showcase each of their unique, musical passions and interests.



MAY 23–25

## Janáček's *The Kreutzer Sonata* ●

Richard Belcher, creative lead



JUN 5–8

## Cassie Pilgrim Plays Bach's Oboe d'Amore Concerto ●

Cassie Pilgrim, oboe d'amore and creative lead

# Sandbox

## A new kind of composer residency program

The SPCO Sandbox aims to build a community of curiosity and exploration around new music by inviting composers to develop new works in a collaborative process with the orchestra. After successful residencies and premieres with recent Sandbox composers Viet Cuong and Clarice Assad, we look forward to exciting new works by future composers.

**Valerie Coleman** is our featured Sandbox composer-in-residence in the 2024.25 season and will workshop her new composition next spring before its premiere, May 16–18, 2025. Future Sandbox composer-in-residence **Gabriela Lena Frank** will begin developing her new Sandbox works for the 2025.26 season.

Thank you to our Sandbox funders for their generous support: Amphion Foundation, The Aaron Copland Fund for Music, The Alice M. Ditson Fund of Columbia University, The Nara Fund, Elizabeth and Justus Schlichting, and The Schneiders Family Foundation.

Photo by Kia Caldwell

## Opening Weekend: Mozart's Sinfonia Concertante with Tabea Zimmermann



**Tabea Zimmermann**  
director and viola



**Steven Copes** violin

World-renowned violist and SPCO Artistic Partner Tabea Zimmermann showcases the incredible musical range of the chamber orchestra — from the grandiose to the intimate.

- Wolfgang Amadeus Mozart:** Overture to *Don Giovanni*
- Grażyna Bacewicz:** Divertimento for Strings
- Sergei Prokofiev:** Symphony No. 1, *Classical*
- Wolfgang Amadeus Mozart:** Sinfonia Concertante for Violin and Viola

Fri	SEP 13	7:00 pm	Ordway Concert Hall, Saint Paul
Sat	SEP 14	7:00 pm	Ordway Concert Hall, Saint Paul
Sun	SEP 15	2:00 pm	Ordway Concert Hall, Saint Paul

## Mozart's Haffner Symphony

Led by SPCO Musicians



**Eunae Koh**  
violin and creative lead

A triumphant program curated by SPCO violinist and soloist Eunae Koh, showcasing three generations of Viennese composers and a violin concerto.

- Franz Joseph Haydn:** Violin Concerto No. 4
- Ludwig van Beethoven:** Quartet for String Orchestra, *Serioso* (arr. by Mahler)
- Mabel Daniels:** *Deep Forest*
- Wolfgang Amadeus Mozart:** Symphony No. 35, *Haffner*

Fri	SEP 20	11:00 am	Wooddale Church, Eden Prairie
Fri	SEP 20	7:00 pm	Wooddale Church, Eden Prairie
Sat	SEP 21	7:00 pm	United Church of Christ, Saint Paul

● Photo by Marco Borggreve

## Kyu-Young Kim Plays Vivaldi's *The Four Seasons*

Led by SPCO Musicians



**Kyu-Young Kim** violin

An energetic, string-heavy program with Vivaldi's timeless *The Four Seasons* for Violin and Orchestra at its heart. This uplifting program of works from the 18th century is sure to delight!

- Carl Philipp Emanuel Bach:** Sinfonia in E Minor
- Antonio Vivaldi:** *The Four Seasons*
- Francesco Geminiani:** *La Follia* Variations (arr. by Wiancko)

Fri	SEP 27	11:00 am	Ordway Concert Hall, Saint Paul
Sat	SEP 28	7:00 pm	Ordway Concert Hall, Saint Paul
Sun	SEP 29	3:00 pm	Saint Andrew's, Mahtomedi

## Julie Albers Plays Elgar's Cello Concerto



**Julie Albers** cello

Led by SPCO Musicians

These somber, spirited, reflective works embody change and transformation: Haydn's unrepentant sinner, Kancheli's spiritual journey, and Elgar's hopeful renewal.

- Franz Joseph Haydn:** Symphony No. 22, *The Philosopher*
- Giya Kancheli:** *Magnum Ignotum*
- Edward Elgar:** Cello Concerto (arr. by Farrington)

Thu	OCT 10	7:00 pm	Shepherd of the Valley, Apple Valley
Fri	OCT 11	11:00 am	Ordway Concert Hall, Saint Paul
Sat	OCT 12	7:00 pm	Ordway Concert Hall, Saint Paul

● Express Concerts are performed without intermission. See page 9.



## When We Were Trees with Abel Selaocoe



**Abel Selaocoe**  
director and cello

**Richard Belcher** cello

The highly anticipated return of SPCO Artistic Partner Abel Selaocoe, who joins SPCO cellist Richard Belcher in a cello-centric program featuring elements of music from around the world.

**Marin Marais:** *Les Voix Humaines (The Human Voice)*  
(arr. by Selaocoe)

**Abel Selaocoe:** *Hlokomela (Take Care)* (arr. by Thomas)

**Giovanni Benedetto Platti:** Cello Concerto in D

**Johann Sollima:** *When We Were Trees*

**Johann Sebastian Bach:** Sarabande (arr. by Thomas)

**Wojciech Kilar:** *Orawa*

Fri **OCT 18** 7:00 pm Ordway Concert Hall, Saint Paul

Sat **OCT 19** 7:00 pm Ordway Concert Hall, Saint Paul

Sun **OCT 20** 2:00 pm Ordway Concert Hall, Saint Paul

## Beethoven's Fifth Symphony



Led by SPCO Musicians

A sonic feast: experience stirring, melodic works for wind octet and string orchestra that invite listeners to fall into the grandeur of Beethoven's Fifth Symphony.

**Arvo Pärt:** *Fratres* for Wind Octet and Percussion  
(arr. by Briner)

**Igor Stravinsky:** *Apollon musagète*, Ballet in Two Scenes  
(1947 version)

**Ludwig van Beethoven:** Symphony No. 5

Fri **NOV 1** 11:00 am Ordway Concert Hall, Saint Paul

Fri **NOV 1** 7:00 pm Ordway Concert Hall, Saint Paul

Sat **NOV 2** 7:00 pm Ordway Concert Hall, Saint Paul

Sun **NOV 3** 2:00 pm Ted Mann Concert Hall, Minneapolis

• Photo by Christina Ebenezzer

## Beethoven, Coleman and Tate

Led by SPCO Musicians



This evocative program includes scenes from the American Southwest, a prayer of thanks and a string quartet's imitation of the harp.

**Jerod Tate:** Six Epitomes for String Quartet, *Pisachi (Reveal)*

**Valerie Coleman:** *Maombi Asante (A Prayer of Thanks)*

**Ludwig van Beethoven:** String Quartet No. 10, *Harp*

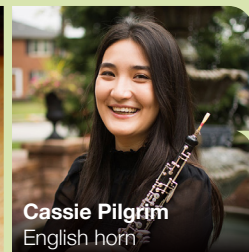
Fri **NOV 8** 7:00 pm Capri Theater, North Minneapolis

For more information, see page 8.

## Haydn's *Il Distratto* Symphony



**Andrew Brady** creative lead



**Cassie Pilgrim**  
English horn

Led by SPCO Musicians

Comedy and tragedy intertwine in a program of theatrical music by well-known composers of the 18th and 19th centuries.

**Ludwig van Beethoven:** *Coriolan* Overture

**Felix Mendelssohn:** Nocturne and Scherzo from  
*A Midsummer Night's Dream*

**Jean Sibelius:** "The Swan of Tuonela" from *Legends*  
(arr. by Posthuma)

**Franz Joseph Haydn:** Symphony No. 60, *Il distratto*

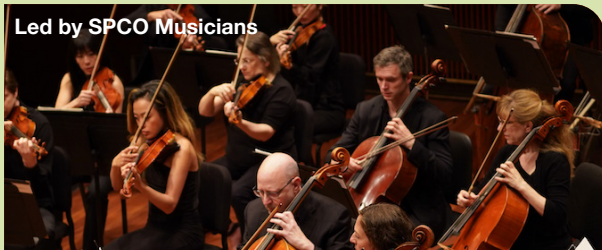
Thu **NOV 14** 7:00 pm Temple Israel, Minneapolis

Fri **NOV 15** 11:00 am Ordway Concert Hall, Saint Paul

Sat **NOV 16** 7:00 pm Ordway Concert Hall, Saint Paul

Sun **NOV 17** 3:00 pm Saint Andrew's, Mahtomedi

## Tchaikovsky's *The Seasons*



Led by SPCO Musicians

Experience a melodic journey that ebbs and flows through the twelve months of the year in a re-imagining of Tchaikovsky's *The Seasons*, newly arranged for chamber orchestra.

- Pyotr Ilyich Tchaikovsky:** *The Seasons* (arr. by Montgomery and Norpoth)
- Sergei Prokofiev:** Suite from *Romeo and Juliet* for Wind Octet (arr. by Tarkmann)
- Dmitri Shostakovich:** Chamber Symphony (after String Quartet No. 3, Opus 73) (arr. by Barshai)

Fri	NOV 22	11:00 am	Wooddale Church, Eden Prairie
Fri	NOV 22	7:00 pm	Wooddale Church, Eden Prairie
Sat	NOV 23	7:00 pm	United Church of Christ, Saint Paul

## Copland's *Appalachian Spring*



Led by SPCO Musicians



Clara Osowski  
mezzo-soprano

Over Thanksgiving weekend, the SPCO welcomes back mezzo-soprano Clara Osowski in a vibrant, diverse and sentimental exploration of North American musical traditions.

- George Gershwin:** Lullaby for Strings
- Duke Ellington:** Three Songs for Chamber Orchestra (arr. by Prutsman)
- Charles Ives:** Selections from *114 Songs* (arr. by Posthuma)
- Aaron Copland:** Suite from *Appalachian Spring*

Fri	NOV 29	7:00 pm	Ordway Concert Hall, Saint Paul
Sat	NOV 30	7:00 pm	Ordway Concert Hall, Saint Paul
Sun	DEC 1	2:00 pm	Ordway Concert Hall, Saint Paul

## Bach's *Brandenburg Concertos*



Richard Egarr  
conductor and  
harpsichord

Exquisite, timeless, virtuosic: the SPCO's beloved, annual tradition sparkles even brighter this season as led by ebullient Artistic Partner Richard Egarr.

- Johann Sebastian Bach:** *Brandenburg* Concerto No. 1
- Johann Sebastian Bach:** *Brandenburg* Concerto No. 6
- Johann Sebastian Bach:** *Brandenburg* Concerto No. 5
- Johann Sebastian Bach:** *Brandenburg* Concerto No. 3
- Johann Sebastian Bach:** *Brandenburg* Concerto No. 4

Fri	DEC 13	11:00 am	Ordway Concert Hall, Saint Paul
Sat	DEC 14	7:00 pm	Ordway Concert Hall, Saint Paul
Sun	DEC 15	2:00 pm	Ordway Concert Hall, Saint Paul

# Concert Membership

Your pass to unlimited concerts!

Simple, flexible and affordable! For as low as \$5/month, Concert Members can attend an unlimited number of SPCO performances at no additional charge.

[thespco.org/membership](http://thespco.org/membership)



## Holiday Concerts: Handel's *Messiah*

Co-presented with  
Basilica of Saint Mary



**Patrick Dupré Quigley** conductor  
**Lauren Snouffer** soprano  
**Clara Osowski** mezzo-soprano  
**John Matthew Myers** tenor  
**John Moore** baritone  
**The Singers — Minnesota Choral Artists**  
**Matthew Culloton** artistic director

A joyous and reflective holiday favorite — Handel's *Messiah* is an exultant and unforgettable experience.

**George Frideric Handel:** *Messiah*

Thu	DEC 19	7:00 pm	Basilica of Saint Mary, Minneapolis
Fri	DEC 20	7:00 pm	Basilica of Saint Mary, Minneapolis
Sat	DEC 21	7:00 pm	Ordway Concert Hall, Saint Paul
Sun	DEC 22	2:00 pm	Ordway Concert Hall, Saint Paul

## Roman Rabinovich Plays Mozart's Piano Concerto No. 20



**Roman Rabinovich**  
piano

Led by SPCO Musicians  
**John Moore** baritone  
**Matthew Wilson** horn

"Spellbinding" (*Calgary Herald*) pianist Roman Rabinovich plucks at emotions just beneath the surface in his SPCO debut.

**Wolfgang Amadeus Mozart:** Horn Quintet

**Igor Stravinsky:** Concerto in D, *Base!*

**Francis Poulenc:** *Le bal masqué (The Masked Ball)*

**Wolfgang Amadeus Mozart:** Piano Concerto No. 20

Fri	JAN 17	11:00 am	Ordway Concert Hall, Saint Paul
Sat	JAN 18	7:00 pm	Ordway Concert Hall, Saint Paul
Sun	JAN 19	2:00 pm	Ordway Concert Hall, Saint Paul

## Haydn's *Fire* Symphony



**Nina Tso-Ning Fan** violin

Led by SPCO Musicians

SPCO violinist Nina Tso-Ning Fan solos in this spirited program centering on the passage of time, igniting a winter blaze.

**Jean-Philippe Rameau:** Suite from *Les Boréades*

**Fanny Mendelssohn-Hensel:** *January, February* and *March* from *Das Jahr* (arr. by Posthuma)

**Max Richter:** *Winter* from *The Four Seasons Recomposed*

**Franz Joseph Haydn:** Symphony No. 59, *Fire*

**Antonio Vivaldi:** *Winter* from *The Four Seasons*

Thu	JAN 30	7:00 pm	Temple Israel, Minneapolis
Fri	JAN 31	7:00 pm	Ordway Concert Hall, Saint Paul
Sat	FEB 1	7:00 pm	Ordway Concert Hall, Saint Paul



FEBRUARY

## Beethoven and Tower



One of Beethoven's most famous pieces during his lifetime is paired with the vivid 1988 composition *Island Prelude* by American composer Joan Tower.

Fri FEB 7 7:00 pm Capri Theater, North Minneapolis

**Joan Tower:** *Island Prelude*

**Ludwig van Beethoven:** Septet, Opus 20

For more information, see page 8.

## Four Spirits with Abel Selaocoe



**Abel Selaocoe**  
director and cello

**Bernhard Schimpelsberger**  
percussion

Imaginative and genre-expanding arrangements abound alongside new works by SPCO Artistic Partner Abel Selaocoe and his musical influences.

**Igor Stravinsky:** *Dumbarton Oaks*

**Marius Neset:** *Birds* (arr. by Woodgates)

**Abel Selaocoe:** *Four Spirits* (arr. by Woodgates)

Fri FEB 14 11:00 am Ordway Concert Hall, Saint Paul

Sat FEB 15 7:00 pm Ordway Concert Hall, Saint Paul

Sun FEB 16 2:00 pm Ted Mann Concert Hall, Minneapolis

FEBRUARY

## Fire Shut Up in My Bones with the Turtle Island Quartet

**Nicholas Newton** vocals

**Adrienne Danrich** vocals



Sun FEB 23 2:00 pm Ordway Concert Hall, Saint Paul

Based on the 2014 memoir by Charles M. Blow, with music by Terence Blanchard and libretto by Kasi Lemmons, the opera *Fire Shut Up in My Bones* premiered at Opera Theater St. Louis in 2019. The Metropolitan Opera opened its season with the work in 2021 — the first in its 138 years written by an African American composer. It became an unparalleled success and was staged again during the Met's 2023.24 season. In an effort to continue the message that opera and classical music are for everyone, Blanchard and The E-Collective have teamed up with the Grammy-winning Turtle Island Quartet and visual artist Andrew F. Scott to create a concert production that features excerpts from the opera performed by the composer, this incredible ensemble, and two guest singers. The music and Scott's video projections give the audience a look inside the mind of Blanchard and the world he created.

Presented by the Arts Partnership

Please note: The SPCO does not perform on this program.

Tickets can be purchased through the Ordway.

Visit [ordway.org](http://ordway.org) or call 651.224.4222.

# Support the SPCO

Our mission wouldn't be possible without the support of audience members like you!

Visit [thespc.org/contribute](http://thespc.org/contribute)

to make a gift today.

## MARCH

### Piazzolla's *The Four Seasons of Buenos Aires*



Led by SPCO Musicians  
Eunice Kim violin

SPCO violinist Eunice Kim tackles Astor Piazzolla's fiery musical response to Antonio Vivaldi's *The Four Seasons*.

**Valerie Coleman:** *Tracing Visions*

**Astor Piazzolla:** *The Four Seasons of Buenos Aires* (arr. by Desyatnikov)

**Pyotr Ilyich Tchaikovsky:** Chamber Symphony No. 1 (arr. by Theofanidis)

Fri **MAR 7** 11:00 am Wooddale Church, Eden Prairie

Fri **MAR 7** 7:00 pm Wooddale Church, Eden Prairie

Sat **MAR 8** 7:00 pm United Church of Christ, Saint Paul

### Haydn's *Drum Roll* Symphony with Richard Egarr



**Richard Egarr** conductor

An exhilarating program showcasing Artistic Partner Richard Egarr's masterful Baroque arrangements, alongside the suspense and joy of Haydn.

**Johann Sebastian Bach:** *Goldberg Canons* (arr. by Egarr)

**Emilie Mayer:** Symphony No. 1

**Franz Joseph Haydn:** Symphony No. 103, *Drum Roll*

Fri **MAR 14** 7:00 pm Ordway Concert Hall, Saint Paul

Sat **MAR 15** 7:00 pm Ordway Concert Hall, Saint Paul

Sun **MAR 16** 2:00 pm Ordway Concert Hall, Saint Paul

● Photo by Marco Borggreve

## MARCH · APRIL

### Bruch and Korngold with Tabea Zimmermann



**Tabea Zimmermann**  
director and viola



**Sang Yoon Kim**  
clarinet

Artistic Partner Tabea Zimmermann teams up with Principal Clarinet Sang Yoon Kim in a double concerto full of Romantic flourish and velvety harmonies intertwined with the full orchestra.

**Franz Schubert:** Selections from *Rosamunde*

**Erich Wolfgang Korngold:** Symphonic Serenade

**Paul Hindemith:** *Kleine Kammermusik* for Flute, Oboe, Clarinet, Horn and Bassoon

**Max Bruch:** Concerto for Clarinet and Viola

Thu **MAR 27** 7:00 pm Shepherd of the Valley, Apple Valley

Fri **MAR 28** 11:00 am Ordway Concert Hall, Saint Paul

Sat **MAR 29** 7:00 pm Ordway Concert Hall, Saint Paul

Sun **MAR 30** 3:00 pm Saint Andrew's, Mahtomedi

### Beethoven, Coleman and Schifrin

Led by SPCO Musicians



Quintets made up of SPCO musicians perform a tribute to Muhammad Ali, music inspired by New Orleans and Beethoven's *Storm* quintet.

**Valerie Coleman:** *Shot Gun Houses*

**Lalo Schifrin:** *La Nouvelle Orleans (New Orleans)*

**Ludwig van Beethoven:** String Quintet in C Major, *Storm*

Fri **APR 4** 7:00 pm Capri Theater, North Minneapolis

For more information, see page 8.

● Photo by Marco Borggreve

## Mozart's 40th Symphony with Dmitry Sinkovsky



Led by SPCO Musicians

**Dmitry Sinkovsky**  
conductor and violin

Violinist and conductor  
Dmitry Sinkovsky returns to lead the SPCO in Mozart's essential, wildly popular and triumphant 40th Symphony.

**George Frideric Handel:** Overture to *Agrippina*  
**George Frideric Handel:** Concerto Grosso No. 6  
**Antonio Vivaldi:** Concerto in D for Violin, Two Oboes, Two Horns, Timpani, Strings and Harpsichord  
**Wolfgang Amadeus Mozart:** Symphony No. 40

Thu **APR 10** 7:00 pm Temple Israel, Minneapolis  
 Fri **APR 11** 11:00 am Ordway Concert Hall, Saint Paul  
 Sat **APR 12** 7:00 pm Ordway Concert Hall, Saint Paul

● Photo by Peter Braig

## Jasmine Choi Plays Mozart's Second Flute Concerto



Led by SPCO Musicians

**Jasmine Choi** flute

Known as the "goddess of the flute" (*Korea Times*), former Principal Flute of the Vienna Symphony Jasmine Choi makes her SPCO debut with soaring melodies and striking precision.

**Sergei Prokofiev:** Sonata for Two Violins  
**Sergei Prokofiev:** Sonata No. 7, *Stalingrad* (arr. by Prutsman)  
**Wolfgang Amadeus Mozart:** Flute Concerto No. 2  
**Pablo de Sarasate:** *Zigeunerweisen* for Flute and Orchestra (arr. by Choi)

Thu **APR 24** 7:00 pm Shepherd of the Valley, Apple Valley  
 Fri **APR 25** 11:00 am Ordway Concert Hall, Saint Paul  
 Sat **APR 26** 7:00 pm Ordway Concert Hall, Saint Paul  
 Sun **APR 27** 2:00 pm Ted Mann Concert Hall, Minneapolis

## Steven Copes Plays Prokofiev's First Violin Sonata



Led by SPCO Musicians  
**Steven Copes** violin

Resonating with ethereal quietude, this program evokes transformation, paying homage to unwavering spirit amidst haunting winds.

**Zoltan Almashi:** *Mariupol (Maria's City)*  
**Franz Joseph Haydn:** Symphony No. 44, *Mourning*  
**Sergei Prokofiev:** Violin Sonata No. 1 (arr. by Prutsman)

Fri **MAY 2** 7:00 pm Ordway Concert Hall, Saint Paul  
 Sat **MAY 3** 7:00 pm Ordway Concert Hall, Saint Paul

## Coleman's Sandbox Premiere with William Eddins

**William Eddins** conductor



Experience the SPCO Sandbox Composer-in-Residence world premiere by Valerie Coleman alongside lively and reflective works conducted by William Eddins.

**Igor Stravinsky:** *Dances concertantes*  
**Valerie Coleman:** Sandbox Premiere  
**George Walker:** *Lyric* for Strings  
**Alberto Ginastera:** *Variaciones concertantes* for Chamber Orchestra

Fri **MAY 16** 11:00 am Ordway Concert Hall, Saint Paul  
 Sat **MAY 17** 7:00 pm Ordway Concert Hall, Saint Paul  
 Sun **MAY 18** 2:00 pm Ordway Concert Hall, Saint Paul



## Janáček's *The Kreutzer Sonata* ●

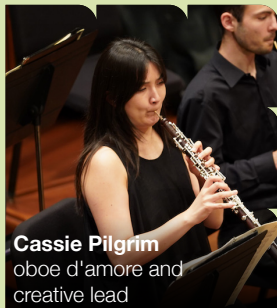


**Led by SPCO Musicians**  
**Richard Belcher** creative lead  
 SPCO cellist Richard Belcher curates a program full of drama, including a world premiere written by Grammy award-winning jazz pianist Billy Childs.

**Billy Childs:** New Work (SPCO co-commission)  
**Anna Clyne:** *Overflow*  
**Leoš Janáček:** String Quartet No. 1, *The Kreutzer Sonata* (arr. by Belcher)  
**Maurice Ravel:** *Très rythmé* (arr. by Wiancko)

Fri **MAY 23** 11:00 am Wooddale Church, Eden Prairie  
 Fri **MAY 23** 7:00 pm Wooddale Church, Eden Prairie  
 Sat **MAY 24** 7:00 pm United Church of Christ, Saint Paul  
 Sun **MAY 25** 3:00 pm Saint Andrew's, Mahtomedi

## Cassie Pilgrim Plays Bach's Oboe d'Amore Concerto ●



**Led by SPCO Musicians**  
**Sang Yoon Kim** clarinet  
**Alicia McQuerrey** flute  
**Julie Albers** cello  
 SPCO Principal Oboe Cassie Pilgrim curates a program of Baroque and contemporary music stretching from the “big bang” to the “end of time.”

**Cassie Pilgrim**  
 oboe d'amore and creative lead

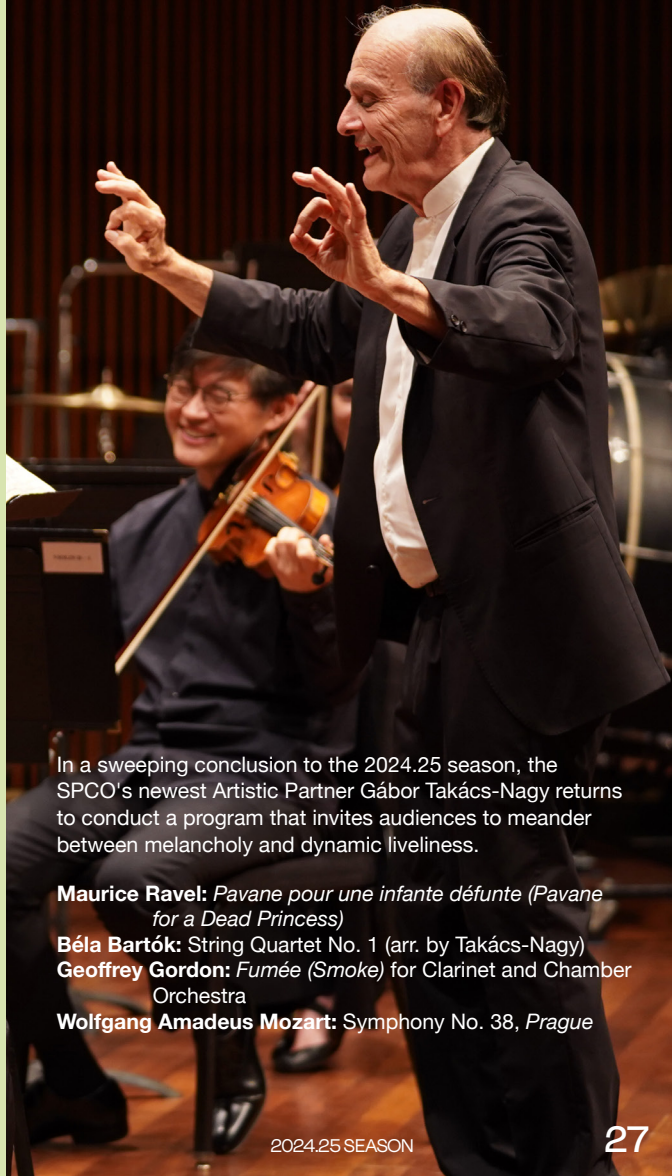
**Jean-Féry Rebel:** Selections from *Les Eléments* (arr. by McGegan)  
**Tania León:** *Alma* for Solo Flute  
**Olivier Messiaen:** Selections from *Quartet for the End of Time*  
**Caroline Shaw:** *Entr'acte*  
**Johann Sebastian Bach:** Concerto for Oboe d'Amore  
 Thu **JUN 5** 7:00 pm Shepherd of the Valley, Apple Valley  
 Fri **JUN 6** 7:00 pm Ordway Concert Hall, Saint Paul  
 Sun **JUN 8** 2:00 pm Ted Mann Concert Hall, Minneapolis

● Express Concerts are performed without intermission. See page 9.

## Season Finale: Mozart's *Prague* Symphony with Gábor Takács-Nagy

**Gábor Takács-Nagy** conductor  
**Sang Yoon Kim** clarinet

Fri **JUN 13** 11:00 am Ordway Concert Hall, Saint Paul  
 Sat **JUN 14** 7:00 pm Ordway Concert Hall, Saint Paul  
 Sun **JUN 15** 2:00 pm Ordway Concert Hall, Saint Paul



In a sweeping conclusion to the 2024.25 season, the SPCO's newest Artistic Partner Gábor Takács-Nagy returns to conduct a program that invites audiences to meander between melancholy and dynamic liveliness.

**Maurice Ravel:** *Pavane pour une infante défunte (Pavane for a Dead Princess)*  
**Béla Bartók:** String Quartet No. 1 (arr. by Takács-Nagy)  
**Geoffrey Gordon:** *Fumée (Smoke)* for Clarinet and Chamber Orchestra  
**Wolfgang Amadeus Mozart:** Symphony No. 38, *Prague*

# How to Order

**ONLINE** Visit [thespco.org](https://thespco.org).

**PHONE** Call our Ticket Office at 651.291.1144.

## HOURS

Mon–Fri 12pm–5pm

Sat 11am–3pm (Sep–May)

# Ticket Purchase Details

The Saint Paul Chamber Orchestra is the only authorized seller of SPCO concert tickets.

# Unable To Use Your Tickets?

## LET US KNOW SO SOMEONE ELSE CAN ATTEND

We often have to turn people away because concerts are sold out, so please let us know if you can't make it to your concert. Subscription tickets may be exchanged into any other regular SPCO concert, or banked in your SPCO account for free. Any changes to tickets must take place before the concert has started.

Call our Ticket Office at **651.291.1144** or visit [thespco.org/exchange](https://thespco.org/exchange) to exchange or bank your tickets.

You may also turn back your tickets as a tax-deductible gift to the SPCO. Call **651.291.1144** before the start of the concert or turn back your tickets online at [thespco.org/turnback](https://thespco.org/turnback). Free tickets and tickets obtained as part of an SPCO Concert Membership have no set value, so they cannot be considered a tax-deductible gift. If you have reserved free tickets or have an SPCO Concert Membership, you are still encouraged to turn back your tickets if you cannot make it to a concert, but you will not receive a receipt for the ticket value as a tax-deductible donation.

Please note we are unable to accept turnbacks or exchange tickets after the concert has occurred.



# Club2030

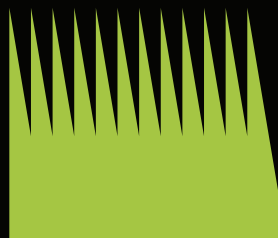
## Unlock a flat rate for individual tickets

Get the best available seats in the hall for only \$10 each — a savings of up to \$58 per ticket.

## Get a discounted Concert Membership

Simple, flexible and affordable! For just \$5/month, Concert Members can attend an unlimited number of SPCO performances at no additional charge.

[thespco.org/club2030](https://thespco.org/club2030)





## Helpful Tips

### Attending Multiple Concerts?

#### BECOME A SEASON TICKET HOLDER

Season ticket holders enjoy special privileges all season long, including early access to the very best seats and more!

#### GET AN SPCO CONCERT MEMBERSHIP

Concert Members can attend an unlimited number of regular SPCO concerts for a recurring fee of \$10/month! Ordering a Concert Membership for the first time? Take advantage of our special, limited-time offer and pay only \$5/month for your first year of concerts.

Learn more at [thespco.org/membership](https://thespco.org/membership).

## Join Our Email Club

Join our email club to receive concert reminders with program information and traffic alerts, as well as exclusive ticket offers, upcoming events and the latest SPCO news.

Sign up at [thespco.org/email](https://thespco.org/email).

## Audience ADA Services

Wheelchair locations, entrance ramps and accessible restrooms are available at all performance locations. Please indicate any accommodations needed when ordering tickets. Accessible tickets are available online, over the phone and in person.

The Ordway, Capri Theater, Temple Israel and Ted Mann Concert Hall are equipped with infrared listening systems. Large print programs are available by request at all SPCO concerts, and braille programs and audio descriptors are available with one month advance notice.

Learn more at [thespco.org/ada](https://thespco.org/ada).

## Late Arrivals

Performances always begin promptly as scheduled. If you are late, you will be seated at an appropriate time by one of our ushers. We are not able to offer refunds or price adjustments if you arrive late for a performance.

Can't make it to a concert?

## Visit our Concert Library for free live and on-demand performances

Our Concert Library offers high-definition concert videos and more than 100 audio recordings. Experience the magic of the SPCO anytime, anywhere, completely free of charge.

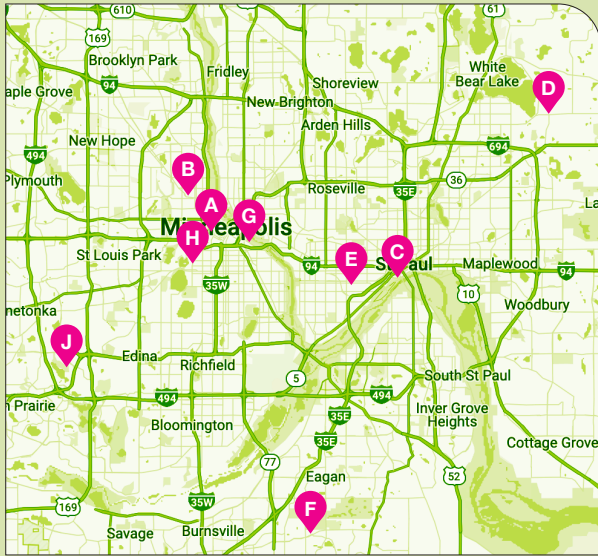
[thespco.org/music](https://thespco.org/music)





# Let Us Come To You!

We are committed to accessibility, which means performing in a variety of convenient locations across the Twin Cities. No matter where you live, SPCO concerts are sure to be near!



# Our Ticket Prices

**Ordway Concert Hall**  
 Adults: \$16–\$68  
 Club2030: \$10  
 Concert Members: Free  
 Children and Students: Free

**Ted Mann Concert Hall**  
 Adults: \$16–\$53  
 Club2030: \$10  
 Concert Members: Free  
 Children and Students: Free

**Basilica of Saint Mary**  
 Adults: \$16–\$66  
 Children: \$5

**Neighborhood Series Venues**  
 Adults: \$16–\$36  
 Club2030: \$10  
 Concert Members: Free  
 Children and Students: Free

# Our Venues

**A Basilica of Saint Mary**  
 88 N 17th St  
 Minneapolis, MN 55403

**B Capri Theater**  
 2027 W Broadway Ave  
 Minneapolis, MN 55411

**C Ordway Concert Hall**  
 345 Washington St  
 Saint Paul, MN 55102

**D Saint Andrew's Lutheran Church**  
 900 Stillwater Rd  
 Mahtomedi, MN 55115

**E Saint Paul's United Church of Christ**  
 900 Summit Ave  
 Saint Paul, MN 55105

**F Shepherd of the Valley Lutheran Church**  
 12650 Johnny Cake Ridge Rd  
 Apple Valley, MN 55124

**G Ted Mann Concert Hall**  
 University of Minnesota  
 2128 4th St S  
 Minneapolis, MN 55455

**H Temple Israel**  
 2323 Fremont Ave S  
 Minneapolis, MN 55405

**J Wooddale Church**  
 6630 Shady Oak Rd  
 Eden Prairie, MN 55344

# Support the Orchestra



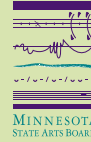
We can only fulfill our mission with the support of audience members like you. Please help us share this great orchestra with everyone in the community.

Visit [thespco.org/contribute](https://thespco.org/contribute) or call 651.292.4332 to make a one-time gift or to become a monthly Sustainer!



## We Applaud Our Institutional Investors

\$100,000+



Katherine B. Andersen Fund of  
The Saint Paul Foundation



National  
Endowment  
for the Arts  
arts.gov

\$50,000 - \$90,999

Fred C. and Katherine B. Andersen Foundation



KNIGHT  
FOUNDATION

\$25,000 - \$49,999



\$15,000 - \$24,999



MAIRS & POWER



THE SAINT PAUL  
**CHAMBER**  
ORCHESTRA

**Call Us**

651.291.1144

**Visit Our Website**

[thespco.org](http://thespco.org)

**Connect With Us**

[@thespco](https://www.instagram.com/thespco)  

